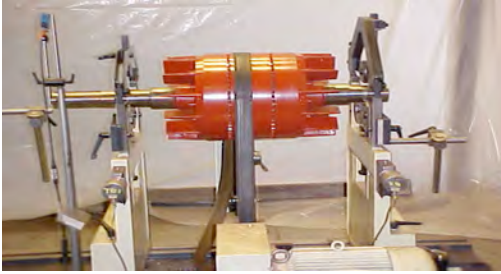




Leppert-Nutmeg Inc.

DYNAMIC BALANCING SPECIALISTS
3 SCHNECK BALANCING MACHINES
SHAFTS & ROTORS UP TO 15,000 LBS



24 HR EMERGENCY
SERVICES
(860) 243-1737

INDUSTRIAL CONTROLS
AC VARIABLE FREQUENCY DRIVES
DC VARIABLE SPEED DRIVES
SOFT STARTS

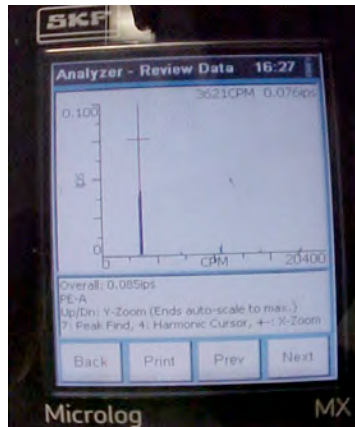
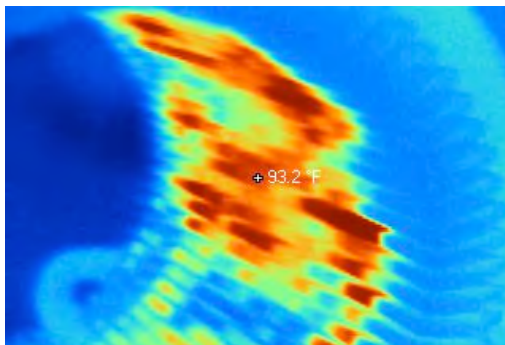
FULL IN HOUSE MACHINE SHOP TOLERANCE TO WITHIN 0.0005"
LATHES WITH 52" DIAMETER & 13' CAPACITY
REBABBITING SLEEVE & THRUST BEARINGS
ON-SITE WELDING, DESIGN & FABRICATION
METALIZING & SLEEVING HOUSINGS
ROTOR-SHAFT & SPINDLE REPAIR

REWIND SPECIALIST
RANDOM & FORM WOUND
CLASS H INSULATION
VPI NEW WINDINGS
REDESIGN RAISE HP



ONSITE SERVICES AVAILABLE INCLUDE
VIBRATION ANALYSIS USING SKF
MONITORING EQUIPMENT
INFRA-RED THERMAL IMAGING OF
MOTORS,
CABINETS, AND CABLES
TESTING OF MOTORS INCLUDING MEGGER,
HI-POT, SURGE, AND POLARIZATION INDEX

SERVO-MOTORS
FANUC, SIEMENS, MITSUBISHI
YASKAWA, BAUMULLER,
& MANY OTHERS



DISTRIBUTOR FOR:
BALDOR/RELIANCE, US MOTORS, WEG,
LEESON, TECO WESTINGHOUSE
& OTHERS



113 West Dudley Town Rd. Bloomfield, CT 06002 860-243-1737 Fax 860-242-8283

WWW.LEPPERT-NUTMEG.COM